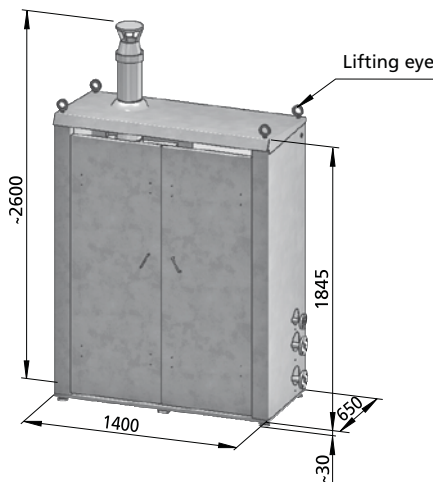


COMPACT HEATING UNITS FOR TANKS WITH INTERNAL VAPORIZER

Comprised by a sealed wall-mounted condensing boiler prepared for propane gas operation, an electrical cabinet and all the pipes and valves necessary for its connection with the LPG vaporization equipment. All this housed and prepared for connection and commissioning. Ideal to install together with internal vaporizers.

CHARACTERISTICS TABLE

Model	Boiler power (kW)	Weight (Kg.)	For internal vaporizers	
VPC30C	45	265	VIA 300	VIA 150
VPC60C	65	275	VIA 500	

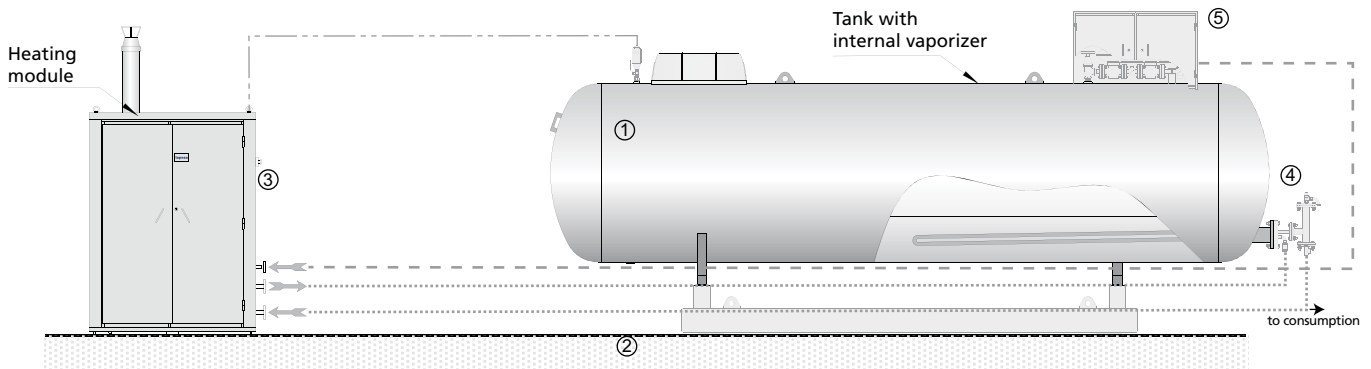


- 1.- Smoke outlet
- 2.- Boiler
- 3.- Adjustable feet
- 4.- Electrical control cabinet
- 5.- Gas supply to boiler (DN15 / PN10)
- 6.- Water outlet (DN25 / PN10)
- 7.- Water return (DN25 / PN10)



TANK WITH INTERNAL VAPORIZER + MODULAR HEATING UNIT

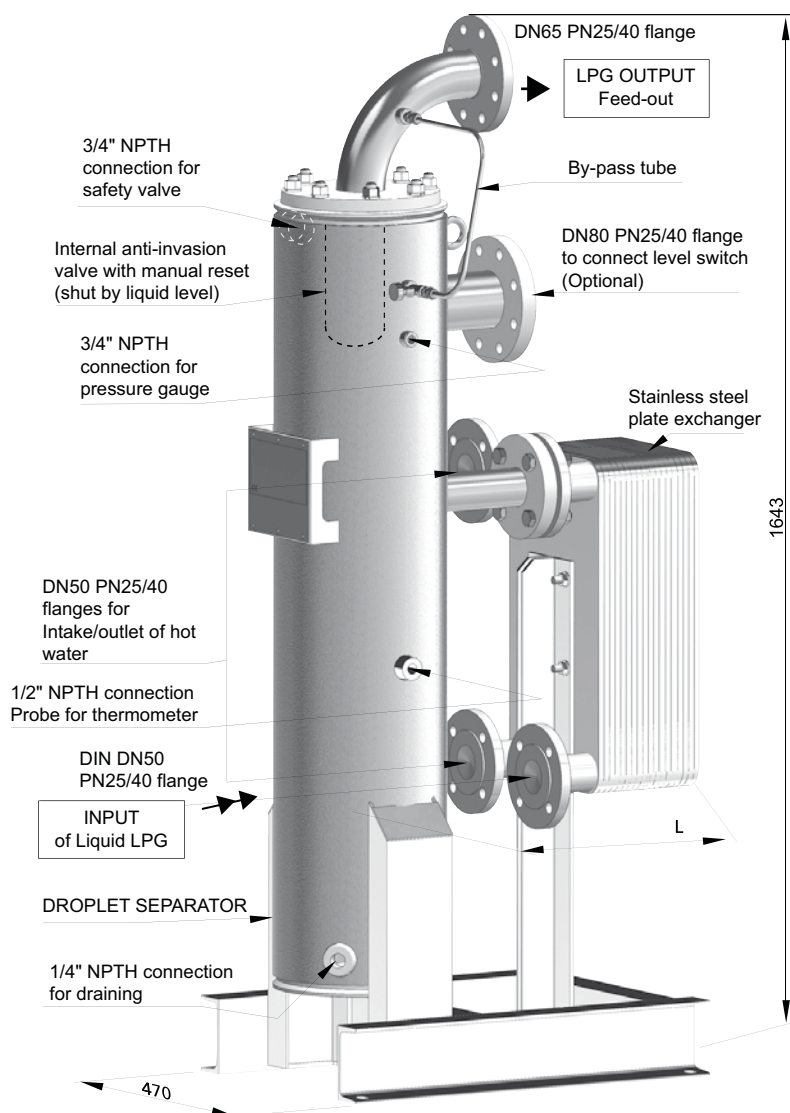
- Set comprising:
- 1- Tank with internal vaporizer with full valve equipment and control train to consumption.
 - 2- Support frame.
 - 3- Heating module.
 - 4- No-gas device.
 - 5- Gas control line.



Installation to be carried out at destination site:

- Control cable (flameproof)
- - - Propane: boiler supply
- Water: heating circuit internal vaporizer

Compact unit model	Tank (l.)	Vaporization (Kg/h)	Heating module model
LPVI4880A+VIA150+VPC30C	4.880	150	VPC30C
LPVI4880A+VIA300+VPC30C	4.880	300	VPC30C
LPVI4880A+VIB500+VPC60C	4.880	500	VPC60C
LPVI110A+VIA150+VPC30C	10.000	150	VPC30C
LPVI110A+VIA300+VPC30C	10.000	300	VPC30C
LPVI110A+VIB500+VPC60C	10.000	500	VPC60C
LPVI113A+VIA150+VPC30C	13.000	150	VPC30C
LPVI113A+VIA300+VPC30C	13.000	300	VPC30C
LPVI113A+VIB500+VPC60C	13.000	500	VPC60C



MODULAR FEED-OUT VAPORIZERS

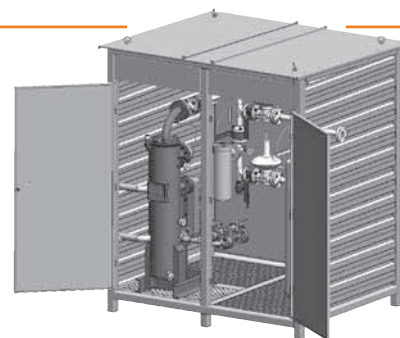
- The system allows the vaporization capacity to be increased by easy replacement of the plate exchanger.
- Vaporization capacities of 500 to 5.000 kg/h.
- Design pressure: 20 bar.
- Rated operating conditions:
Water input temperature: 55°C.
Input-output temperature: 20 °C.
Vaporization pressure: 4 bar.

CHARACTERISTICS TABLE

Vaporization capacity (Kg./h.)	Model Ref.	Approx. tare. (Kg.)	L (mm)
500	VPM 500	170	625
1.000	VPM 1000	175	660
1.500	VPM 1500	185	695
2.000	VPM 2000	195	745
3.000	VPM 3000	215	845
5.000	VPM 5000	240	935

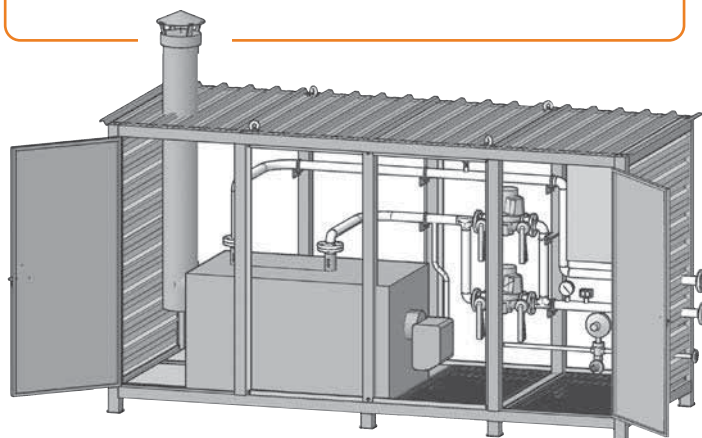
MODULAR VAPORIZATION UNITS EMV models

- They allow direct use of tank gas when consumption is small.
Gas supply to boiler.
Complete unit comprising:
- Modular vaporizer
 - Condensate separators
 - Control train
 - Valves and safety elements



MODULAR HEATING UNITS. EMC models

- Complete unit comprising:
- Heating boiler
 - Pump
 - Regulators, pressure switches, etc.
 - Electric control panel (for boiler module and vaporization module)
 - Gas detection alarm system



MODULAR HEATING-VAPORIZATION SETS

- This is a set formed by the following elements:
- 1 - Vaporization module with EMV modular vaporizer
 - 2 - MC heating module.

On-site installation consists of connecting the gas and heating pipes between the modules (tank to vaporization module and this module to the heating module) and wiring up between booths.

CHARACTERISTICS TABLE

Modular unit model	Vaporizer (Kg./h.)	Rated boiler power (Mcal./h.)
EMV0500+EMC060C	500	60
EMV1000+EMC120C	1000	120
EMV1500+EMC180C	1500	180
EMV2000+EMC240C	2000	240
EMV3000+EMC360C	3000	360

AUTOGAS SKIDS

Horizontal aboveground SKID

Vertical aboveground SKID

Underground SKID

- Stand-alone LPG storage units with pumping equipment and dispenser incorporated in a frame.
- Includes transfer equipment to allow the supply of gas in liquid phase to vehicles, with the maximum guarantee of safety.
- Simplified installation: only requires connection of power supply to the unit and anchoring to the ground (with earth connection).



	MODELS	DIRECTIVES	NORMS
HORIZONTAL TANK	<ul style="list-style-type: none"> • LPUA^{**}: with filling column • LPUA^{**S}: with dispenser • LPUA^{**P}: without dispenser or filling column • LPUA^{**E}: for underground installation with various pump types 	<ul style="list-style-type: none"> • Pressure equipment: 2014/68/UE • Machinery: 2006/42/CE • ATEX: 2014/34/UE • Low voltage: 2014/35/UE • Electromagnetic compatibility: 2014/30/UE 	<ul style="list-style-type: none"> • EN14678 • UNE60630
VERTICAL TANK	<ul style="list-style-type: none"> • LPUA^{**V}: with filling column • LPUAV^{**S}: with dispenser • LPUAV^{**P}: without dispenser or filling column 		

COMPOSITION

LPG STORAGE TANK:

Standard Lapesa tank with a design pressure of 20 bar and special connections for transfer unit.

FRAME:

A support structure that houses the complete installed unit.

LPG TRANSFER LINES:

- Liquid phase outlet line: Includes limiter, shutoff valve and filter for liquid LPG placed before the pump.
- Return line to tank (protects the pump from overpressure) with a by-pass valve.
- Pump-to-dispenser transfer line: Includes safety valve and pressure gauge (LPUA types include shutoff valve with the supply column, in LPUAS model the shutoff valve is integrated in the dispenser).

LPG TRANSFER PUMP:

Specific for LPG in liquid phase.

Nominal values for standard pumps:

- Aboveground skids: 40 l/min (5 bar differential pressure).
- Underground skids LPUA**E-BME: 114 l/min (10 bar differential pressure).
- Underground skids LPUA**E-BMS: 90 l/min (10 bar differential pressure).

SUPPLY UNIT:

- Hose specific for LPG, compliant with EN14678-1 and EN1762.
- Break away included in hose.
- European nozzle according to EN13760.
- Distances to supply unit allow the placement of fencing in the storage area.
- Tanks with filling column: Include hose with nozzle, break-away, start/stop button ("dead man" type), push-button for emergency stop, housing for nozzle. Equipment designed for use with own truck fleet, where commercial transactions are not performed and where number of liters exchanged is not required.

- Tanks with dispenser: Besides the usual items of a dispenser, it also includes totalizers of liters and euros. Equipment designed for installation in service stations, or for consumption control in own truck fleet.
- Units for underground use: Supplied without supply unit (filling column or dispenser). They are ready for use with dispenser.

ELECTRICAL INSTALLATION:

Skids are supplied with electrical installation mounted. Complies with Spanish low voltage electrotechnical regulation.

Electrical installation complies with the Spanish norm for low voltage installations and its annex ETB026 (areas with risk of explosion).

Includes:

- Hoses with mechanical protection, length 30 meters, connected at both ends. Three types of hoses are present:
 - Between pump and cabinet.
 - Between supply unit and cabinet.
 - Between pump and supply unit.
- Electrical cabinet complete will necessary items (limiter, differential, motor-saver). It must be installed in safe zone (outside of ATEX zone). Installation designed for triphasic electrical connection.

ELECTRICAL ACTUATOR (OPTIONAL):

Electrical actuator on liquid phase outlet. This device closes flow when emergency stop is pressed or when the electric supply is down. Specially recommended for skids without filling column nor dispenser (LPUASP**)

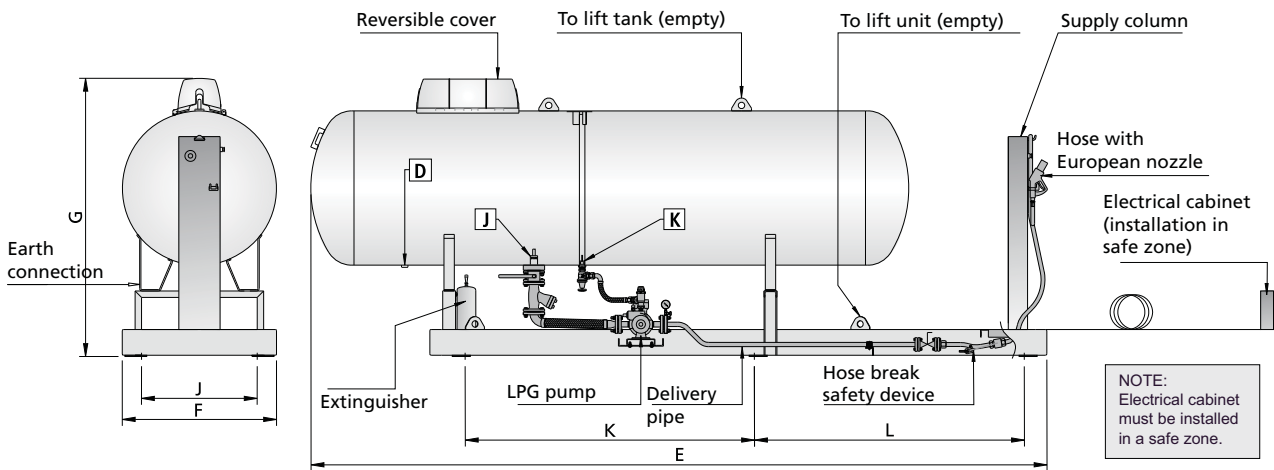
BREAKAWAY COUPLINGS (OPTIONAL):

In the case of dispenser (not filling column), excess flow valves with breakway couplings, to avoid an LPG leakage if a vehicle hits the dispenser.

PREVENTION/SAFETY:

Dry-powder fire extinguishers according to LPG tank size, incorporated in the frame unit. The electrical cabinet should be located in a safe zone.





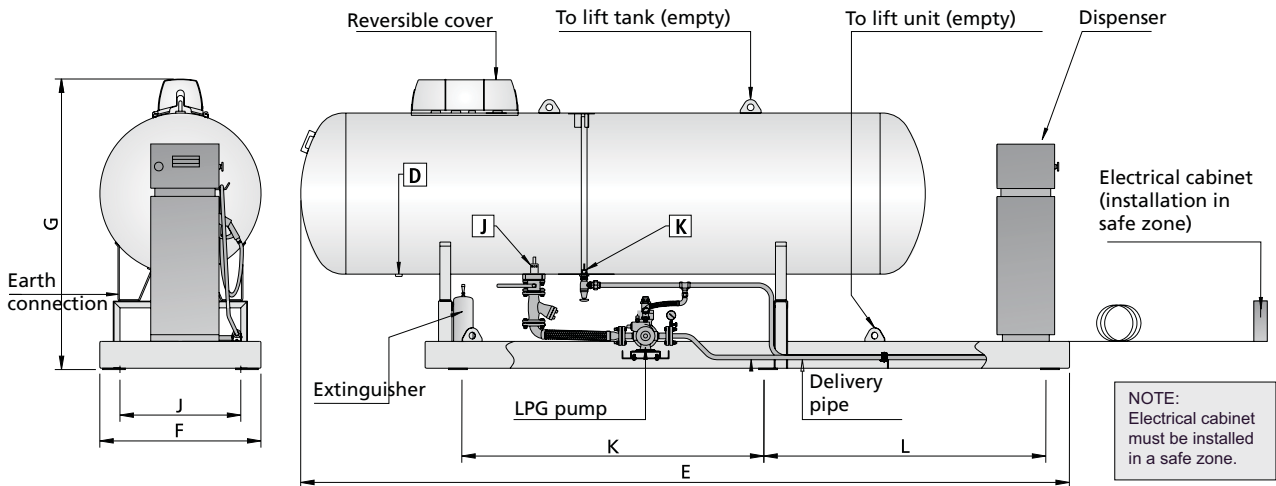
LPUA**

Stand-alone units with filling column (supply hose, "deadman" button and emergency pushbutton). Ideal for in-house consumption, where no commercial transactions are carried out and the litres supplied do not need to be recorded. Supplied with electrical installation.

CHARACTERISTICS TABLE

Model Ref.	Approx. empty weight. (Kg.)	Dimensions (mm) of unit			Dimensions (mm) of anchors			Function	TANK CONNECTIONS			
		E	F	G	J	K	L		Tank diameter			Thread
LPUA1000	590	2.080	1.470	1.650	600	1.400	-	Filling	1-1/4"	1-1/4"	1-1/4"	NPT-H
LPUA2450	1.115	4.425	1.200	2.165	900	1.250	2.450	High point and diameter	3/4"	3/4"	3/4"	NPT-H
LPUA4880	1.585	6.540	1.200	2.165	900	2.250	2.915	Drain	3/4"	1-1/4"	1-1/4"	NPT-H
LPUA6650	2.010	8.135	1.200	2.165	900	3.150	3.265	Magnetic level	Rochester Junior	Rochester Junior	Rochester Junior	--
LPUA8334	2.390	9.715	1.200	2.165	900	3.950	3.650					
LPUA10	2.865	7.940	1.500	2.470	1.200	3.210	3.135	Safety	1-1/4"	1-1/4"	2"	NPT-H
LPUA13	3.505	9.680	1.500	2.470	1.200	4.010	3.605					
LPUA20	5.120	10.560	1.700	2.625	1.400	4.210	4.075					

TANK CONNECTIONS



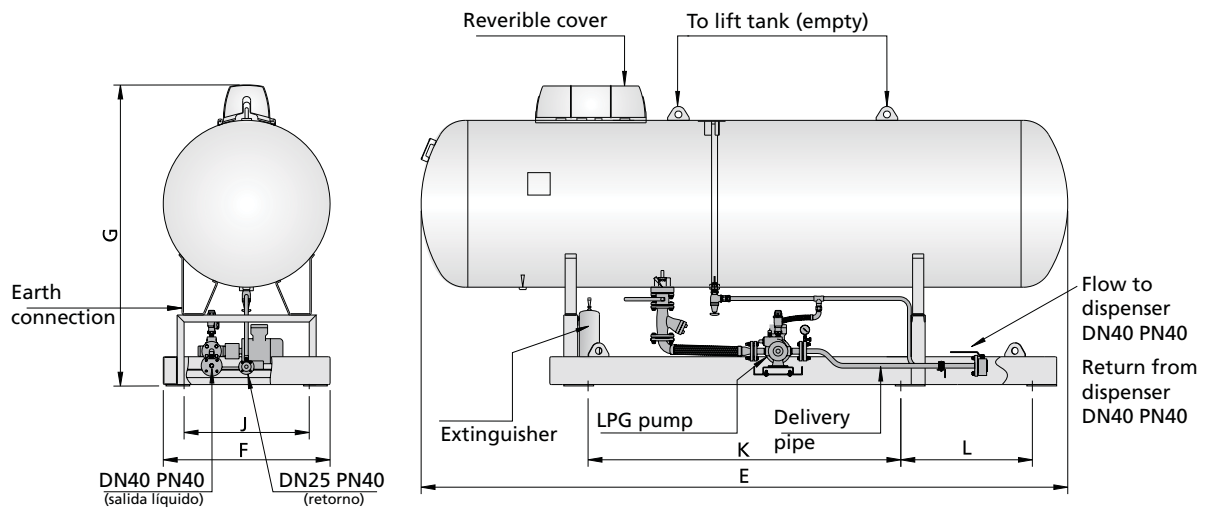
LPUAS**

Stand-alone units with dispenser (incorporating litre and price totalizer and other items). Supplied with electrical installation.

CHARACTERISTICS TABLE

Model Ref.	Approx. empty weight. (Kg.)	Dimensions (mm) of unit			Dimensions (mm) of anchors			Function	TANK CONNECTIONS			
		E	F	G	J	K	L		Tank diameter			Thread
LPUAS2450	1.200	4.425	1.200	2.165	900	1.250	2.450	Filling	1-1/4"	1-1/4"	1-1/4"	NPT-H
LPUAS4880	1.690	6.540	1.200	2.165	900	2.250	2.915	High point and diameter	3/4"	3/4"	3/4"	NPT-H
LPUAS6650	2.100	8.135	1.200	2.165	900	3.150	3.265	Drain	3/4"	1-1/4"	1-1/4"	NPT-H
LPUAS8334	2.500	9.715	1.200	2.165	900	3.950	3.650	Magnetic level	Rochester Junior	Rochester Junior	Rochester Junior	--
LPUAS10	2.960	7.940	1.500	2.470	1.200	3.210	3.135					
LPUAS13	3.600	9.680	1.500	2.470	1.200	4.010	3.605	Safety	1-1/4"	1-1/4"	2"	NPT-H
LPUAS20	5.180	10.560	1.700	2.625	1.400	4.210	4.075					

TANK CONNECTIONS



LPUASP**

Stand-alone units without filling column or dispenser. The dispenser is to be installed in a separate booth or alongside the rest of the dispensers at the petrol station.

CHARACTERISTICS TABLE

TANK CONNECTIONS

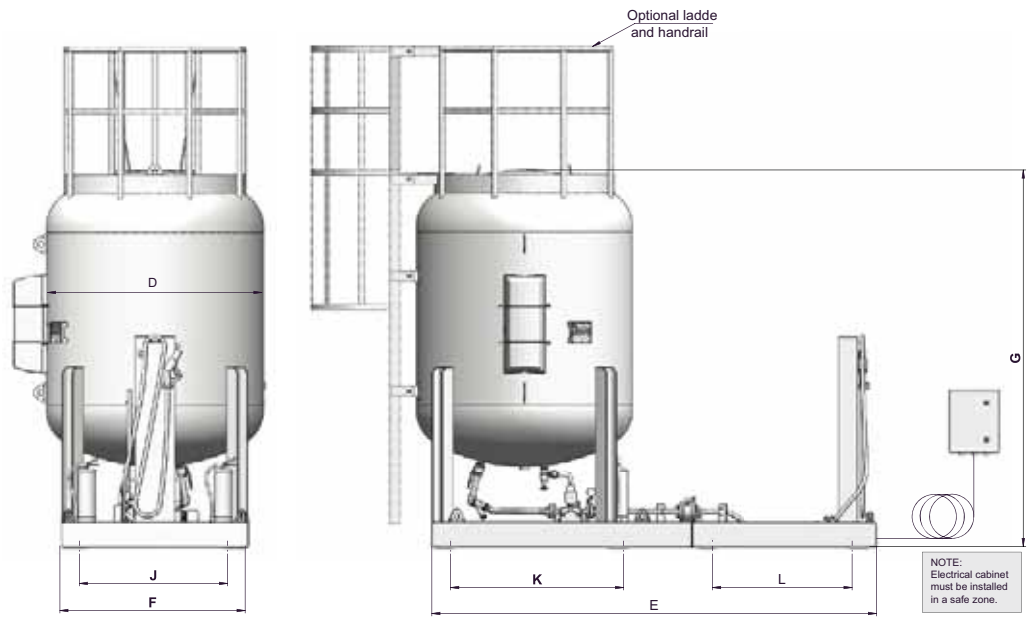
Model Ref.	Approx. empty weight. (Kg.)	Dimensions (mm) of unit			Dimensions (mm) of anchors			Function	Tank diameter			
		E	F	G	J	K	L		D1200	D1500	D1750	Thread
LPUASP2450	1.010	2.900	1.200	2.165	900	1.250	875	Filling	1-1/4"	1-1/4"	1-1/4"	NPT-H
LPUASP4880	1.530	4.650	1.200	2.165	900	2.250	945	High point and diameter	3/4"	3/4"	3/4"	NPT-H
LPUASP6650	1.950	6.240	1.200	2.165	900	3.150	1.290	Drain	3/4"	1-1/4"	1-1/4"	NPT-H
LPUASP8334	2.330	7.825	1.200	2.165	900	3.950	1.685					
LPUASP10	2.790	6.050	1.500	2.470	1.200	3.210	1.165	Magnetic level	Rochester Junior	Rochester Junior	Rochester Junior	--
LPUASP13	3.450	7.785	1.500	2.470	1.200	4.010	1.635					
LPUASP20	4.980	8.760	1.700	2.625	1.400	4.210	4.075	Safety	1-1/4"	1-1/4"	2"	NPT-H



SPECIAL DESIGNS "L" SHAPE
for installation in placed with reduced space or to facilitate access to vehicles (please consult)

LPUAV**

Stand-alone units with filling column (supply hose, "deadman" button and emergency pushbutton). Supplied with electrical installation. Ideal for in-house consumption, where no commercial transactions are carried out and the litres supplied do not need to be recorded. Due to their large dimensions, for transport purposes the skid is supplied loose, to be mounted to tank at destination, except for LPUA2450V and LPUA5000V models.



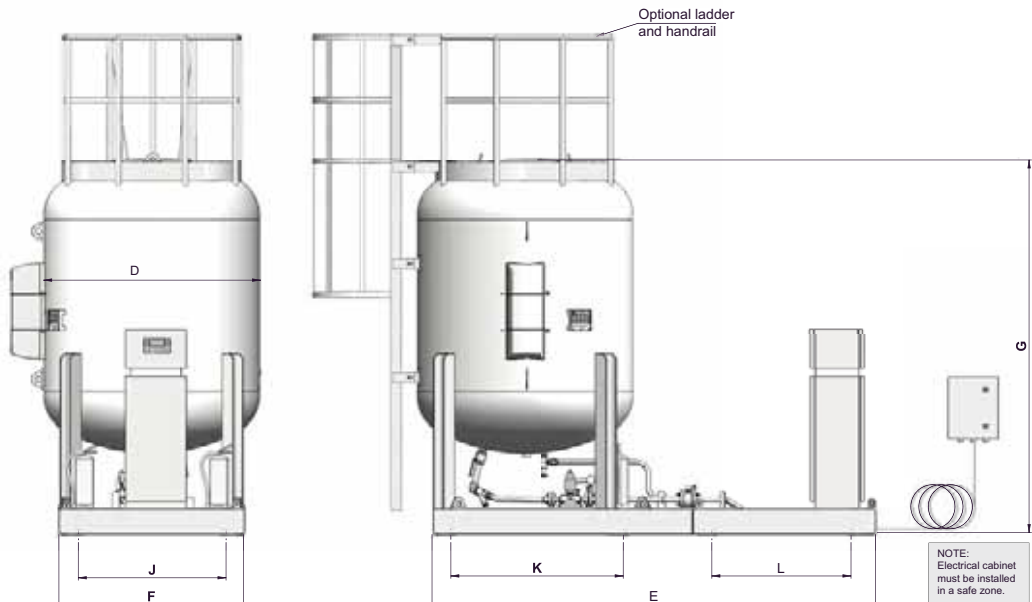
CHARACTERISTICS TABLE

Model Ref.	weight. (Kg.)	Dimensions (mm)							Connection	Size	Thread
		D	E	F	G	J	K	L			
LPUA2450V	1.262	1.200	3.600	1.360	3.050	1.130	1.140	--	Filling	1-1/4"	NPT-H
LPUA5000V	1.820	1.750	3.600	1.500	3.100	1.230	1.400	--	High point and diameter	3/4"	NPT-H
LPUA6650V	2.368	1.750	5.300	1.500	3.840	1.230	1.400	2.875	Drain	1-1/4"	NPT-H
LPUA8400V	2.958	1.750	5.400	1.500	4.570	1.230	1.400	2.975	Magnetic level	Rochester Junior	--
LPUA13V	4.188	1.750	5.760	1.500	6.510	1.230	1.400	3.335	Safety	1-1/4"	NPT-H

TANK CONNECTIONS

LPUASV**

Stand-alone units with dispenser (incorporating litre and price totalizer and other items). Supplied with electrical installation. Due to their large dimensions, for transport purposes the skid is supplied loose, to be mounted to tank at destination, except for LPUAS2450V and LPUAS5000V models.



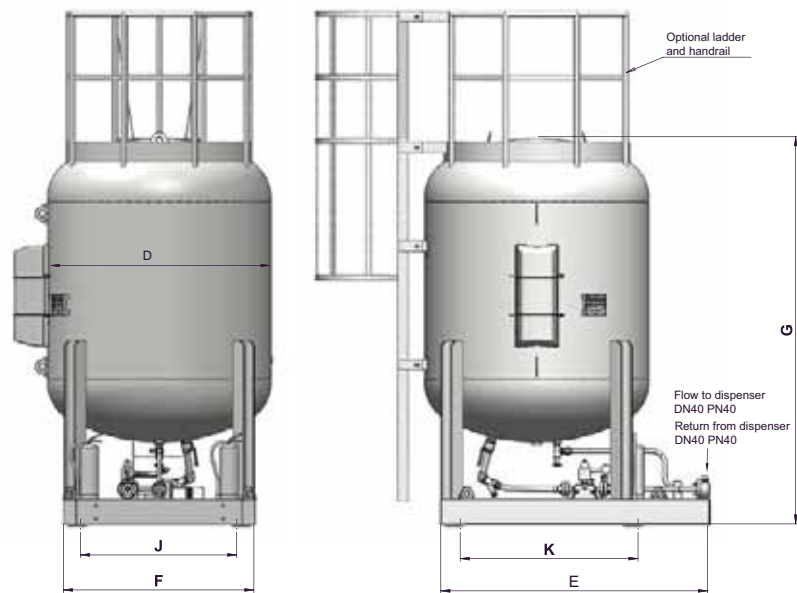
CHARACTERISTICS TABLE

Model Ref.	weight. (Kg.)	Dimensions (mm)							Connection	Size	Thread
		D	E	F	G	J	K	L			
LPUAS2450V	1.341	1.200	3.600	1.360	3.050	1.130	1.140	--	Filling	1-1/4"	NPT-H
LPUAS5000V	1.890	1.750	3.600	1.500	3.100	1.230	1.400	--	High point and diameter	3/4"	NPT-H
LPUAS6650V	2.447	1.750	5.300	1.500	3.840	1.230	1.400	2.875	Drain	1-1/4"	NPT-H
LPUAS8400V	3.037	1.450	5.400	1.500	4.570	1.230	1.400	2.975	Magnetic level	Rochester Junior	--
LPUAS13V	4.267	1.750	5.760	1.500	6.510	1.230	1.400	3.335	Safety	1-1/4"	NPT-H

TANK CONNECTIONS

LPUASPV**

Stand-alone units without filling column or dispenser.
The filling column or dispenser must be installed at the required distance away from this unit.
Supplied with electrical installation.



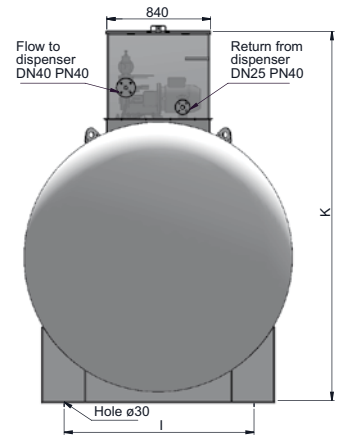
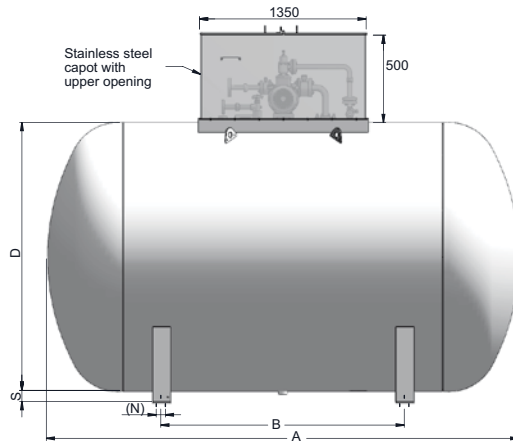
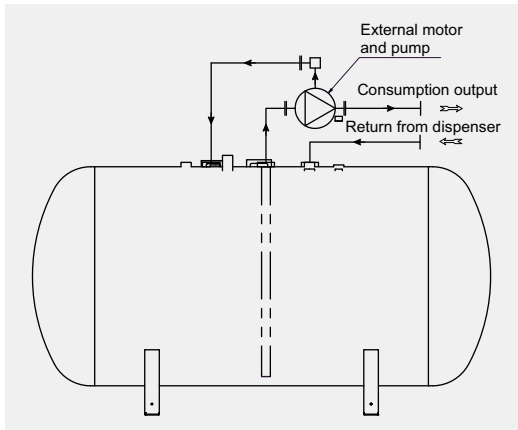
CHARACTERISTICS TABLE

Model Ref.	weight. (Kg.)	Dimensions (mm)					
		D	E	F	G	J	K
LPUASP2450V	875	1.200	1.660	1.360	3.050	1.130	1.140
LPUASP5000V	1.680	1.750	2.230	1.500	3.100	1.230	1.400
LPUASP6650V	2.160	1.750	2.230	1.500	3.840	1.230	1.400
LPUASP8400V	2.750	1.750	2.230	1.500	4.570	1.230	1.400
LPUASP13V	3.980	1.750	2.230	1.500	6.510	1.230	1.400

TANK CONNECTIONS

Connection	Size	Thread
Filling	1-1/4"	NPT-H
High point and diameter	3/4"	NPT-H
Drain	1-1/4"	NPT-H
Magnetic level	Rochester Junior	--
Safety	1-1/4"	NPT-H





LPUAE-BME**

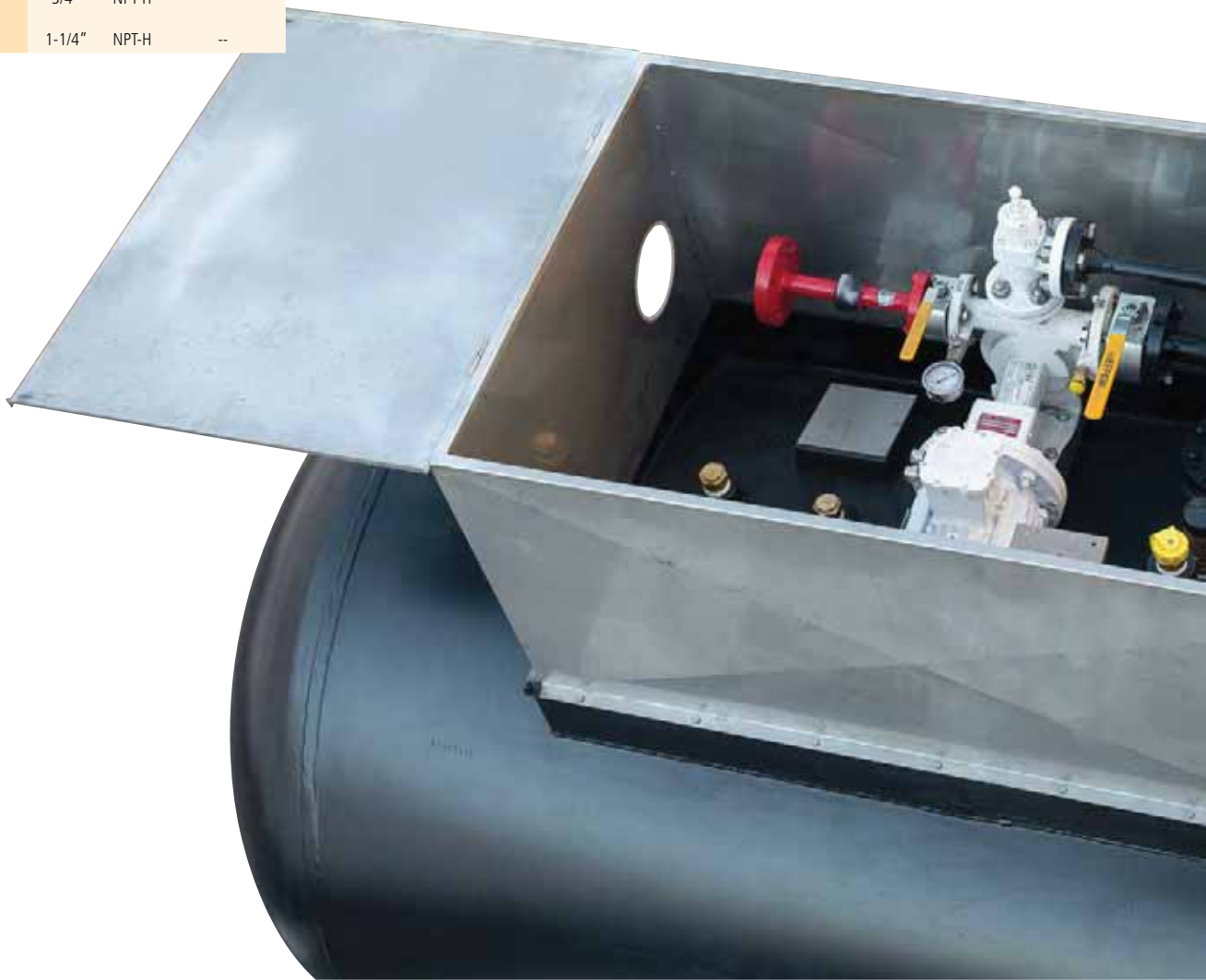
Group motor-pump installed out of the tank, inside the capot, which allows for easy maintenance. Unit designed for installation in areas WITHOUT TRANSIT over the capot.

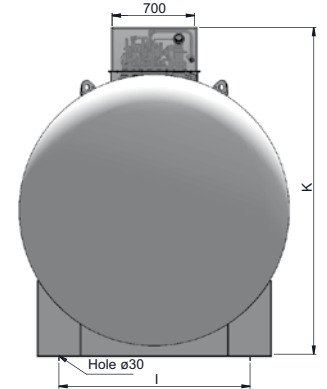
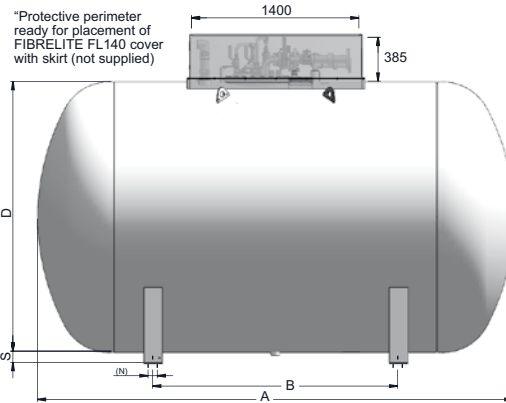
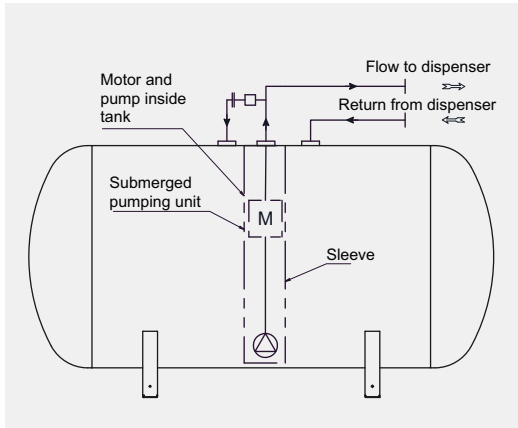
TANK CONNECTIONS

Connection	Size	Thread	Coupling acc. to
Filling	1-1/4"	NPT-H	--
Flow to dispenser	DN40	--	EN 1092-1 PN40
Return from dispenser	DN25	--	EN 1092-1 PN40
Magnetic level	Rochester	--	--
Safety	1-1/4"	NPT-H	--
Drain (with dip pipe)	1-1/4"	NPT-H	--
Manometer and high point Magnetic level	3/4"	NPT-H	--
Reserve connection	1-1/4"	NPT-H	--

CHARACTERISTICS TABLE

Model Ref.	weight. (Kg.)	Dimensions (mm)										
		D	A	B	I	K	S	N	P			
LPUA4950E-BME	1.380	1.500	3.140	1.500	1.000	2.200	200	--	1			
LPUA10E-BME	2.440	1.500	6.050	3.500	1.000	2.200	200	--	1			
LPUA13E-22-BME	3.400	2.200	3.880	2.000	1.560	2.930	93	75	2			
LPUA33E-BME	7.600	2.200	9.260	5.500	1.560	2.930	100	75	2			





LPUAE-BMS**

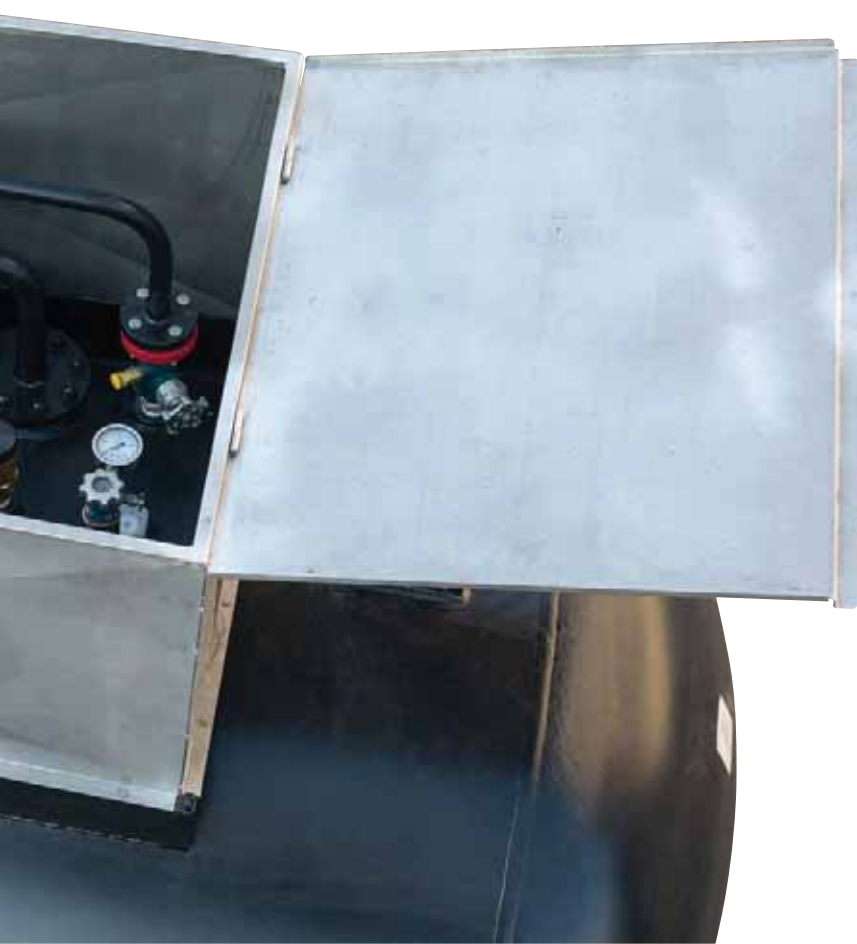
Group motor-pump submerged inside the tank, inside inner sleeve, which can be unmounted without needing to empty the tank. Unit designed for installation in areas WITH TRANSIT over the capot

CHARACTERISTICS TABLE

Model Ref.	weight. (Kg.)	Dimensions (mm)							
		D	A	B	I	K	S	N	P
LPUA4950E-BMS	1.470	1.500	3.140	1.500	1.000	2.085	200	--	1
LPUA10E-BMS	2.530	1.500	6.050	3.500	1.000	2.085	200	--	1
LPUA13E-22-BMS	3.480	2.200	3.880	2.000	1.560	2.680	93	75	2
LPUA33E-BMS	7.600	2.200	9.260	5.500	1.560	2.680	100	75	2

TANK CONNECTIONS

Connection	Size	Thread	Coupling acc. to
Filling	1-1/4"	NPT-H	--
Flow to dispenser	DN50	--	EN 1092-1 PN40
Return from dispenser	DN25	--	EN 1092-1 PN40
Magnetic level	Rochester	--	--
Safety	2"	NPT-H	--
Drain (with dip pipe)	1-1/4"	NPT-H	--
Manometer and high point	3/4"	NPT-H	--
Reserve connection	1-1/4"	NPT-H	--
Boca de hombre	DN420	--	--



TRANSPORTABLE TANK FOR LPG

Tank for storage and transport of LPG.

Its design and homologation allow it to be used as static tank (2014/68/UE) as well as transportable tank (99/36/CE), it includes two CE conformity declarations.

Equipment designed for vertical handling and use.

LPG storage with minimum safety distances.

TRANSPORTABLE TANK: LT1000V

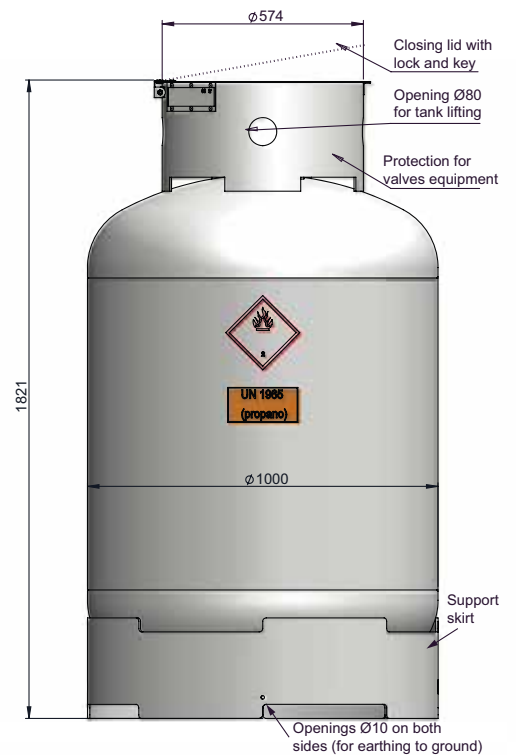
NOMINAL CAPACITY: 990 liters

MAXIMUM OPERATING PRESSURE: 20 bar

TARE (APPROX.): 390 kg

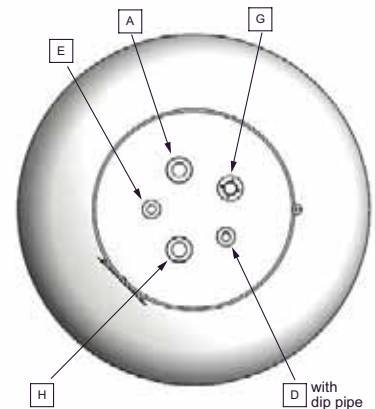
TWIN STAMP:

- Static equipment **CE** (2014/68/UE)
- Transportable equipment **π** (99/36/CE-ADR)



TANK CONNECTIONS

Ref.	Function	Size	Thread
A	Filling	1-1/4"	NPT-F
D	Drain	3/4"	NPT-F
E	Multivalve	3/4"	NPT-F
G	Level	Rochester Junior	--
H	Safety	1-1/4"	NPT-F



TANK CONTAINERS

20, 30 and 40-ft tank containers for transporting LPG overland (road or rail) and by sea.

High-strength steel cylindrical container with breakwater plates inside and korbogen type dished ends, built in reinforced steel ISO-container structure.

(The characteristics of the tank containers described below are for Lapesa type models. Any adaptation of a design to a customer's specific requirements shall involve a new project and the corresponding type-approval).

General/standard characteristics

- Tank-container for the transport of ADR class 2 liquefied gas under pressure, Type 1AA container according to ISO 668.
- Built according to ADR, ISO, CSC, IMDG code
- Product to be contained: LPG (UN 1965), commercial propane and butane.
- ADR design pressure: 27 bar.
- Maximum working pressure: 20.77 bar.
- Test pressure: 27 bar.
- Design temperature: -20 +50°C.

Controls and tests

- Inspections as per design code.
- 100% weld x-raying.
- Hydraulic test at 27 bar.
- Valve tightness test.
- ISO load tests on prototype container.
- ISO, CSC tests.

Equipment

- Background internal valves with flow limiter and opening via automatic return lever, for connections to liquid phase and gas phase, with "fire-safe" type ball valve, sealable with blind cap.
- Valve with pressure gauge and high point indicator.
- Rotating level.
- Background drain valve.
- Internal overpressure safety valve.
- DN500 manhole located on rear head.
- Side metal cabinet for valves.

External finish

- Shot-blasting of unit SA 2 1/2.
- Anti-corrosion protection of surface with coat of polyamide epoxy (60 microns).
- Top coat of white polyurethane (60 microns).

Model	CONTAINER-TANK	LTC52-GLP	LTC38-GLP	LTC25-GLP
Container-tank size	'	40'	30'	20'
Nominal volume	m ³	52,0	38,3	24,5
Total length	mm	12.192	9.125	6.058
Total width	mm	2.438	2.438	2.438
Total height	mm	2.591	2.591	2.591
Tank Diameter	mm	2.400	2.400	2.400
Inner breakwaters	nº	3	2	2
Empty weight	mt	10,15	8,05	6,1
Load LPG	mt	21,85	16,1	10,3



**SEMI-TRAILER
TANKER**

for transport
and distribution
of **LPG**

Tanker type features:

- Products to be transported, liquid gases class 2 (ADR): propane, butane, isobutane, mixtures, etc.
- Manufactured under applicable European Directives: 2010/35/UE (π marking), 2008/68/CE.
- Applicable regulations: ADR, EN12493, IMO8 (optional).
- Maximum working pressure: 19,2 bar.
- Design and test pressure: 25 bar.
- Inspections and controls according to ADR.
- Anticorrosive primer finish (high strength cataphoresis for the frame) and white polyurethane finish (blue chassis).



OVERALL DIMENSIONS FOR A 44 TON SET

- Nominal capacity: 52 m³
- Approximate tare: 14 Ton
- LPG load: 21,8 Ton

INCLUDED ELEMENTS IN A BASIC TANKER

- Internal baffles inside for transport with partial filling.
- Aluminum sunshade in the upper area of the cylinder.
- DN500 inspection manhole.
- Loading cabinet in the central area, with access from both sides.
- Distribution cabinet in the central area, right side.
- Rolling set with the following characteristics:
 - Complete frame, for better distribution of loads, and long life.
 - SAF axes or similar.
 - Aluminum wheels.
 - ADR electrical installation.
 - Parking brake by 2-axis pneumatic actuators.
 - EBS 2S / 2M. Disc 430 x 45.
 - Shaft elevator.
 - Mud wing set, wheel wrenches, aluminum bumpers, tooldrawer, two fire extinguishers with box ...

LPG EQUIPMENT

- Pneumatic operated bottom valves, REGO or similar.
- Manual stopvalves, ball type, with stainless steel sphere.
- Blackmer 3" type pump. With hydraulic motor. With Blackmer 1-1 / 2" bypass.
- Liquid Control type volumetric counter with temperature compensator. Electronic head. Printer in separate cabinet.
- Hose 1-1/4" (28 meters), in winder with pneumatic/hydraulic reel.
- Connections to gas or liquid phase, finished in flange.
- Optionally, the terminal will be placed according to the customer needs.
- All pipe sections are protected by relief valves, either manual or automatic.
- Other tank valves:
 - REGO type rotating level.
 - Internal safety valves, REGO type (IMO case).
 - High point indicator and pressure gauge.
 - Temperature indicator.

lapesa
Solutions



We adapt our products to the needs of our clients (truck, capacity, equipment, sunshade, etc.). An example of a tanker is shown in this catalog. Check with us your requirements.

EMERGENCY/SAFETY SYSTEMS

- The tanker includes **6 emergency pushbuttons** in various tanker locations. When manually activated, they close the tanker stopvalves and the pump switches to stop mode.
- **Detector for closed cabinet:** When valves cabinet is closed (no intention for LPG transfer), this detector closes the tanker stop valves and the pump switches to stop mode.
- **Parking brake:** Tanker stop valves can only be opened when the parking brake is activated.
- **Anti-start system:** In case the truck tries to be started with the valves cabinet open, this safety system acts on the truck brakes, leaving them constantly activated. To avoid a possible wrong contact during truck driving, that could cause a sudden break on road, this system only acts when speed is below 5 km/h (when starting the truck).

HYDRAULIC INSTALLATION:

- For the correct operation of the hydraulic circuit that moves the LPG pump, the tractor unit must have a power intake, hydraulic pump, oil tank, cooler...

FINAL DOCUMENTATION

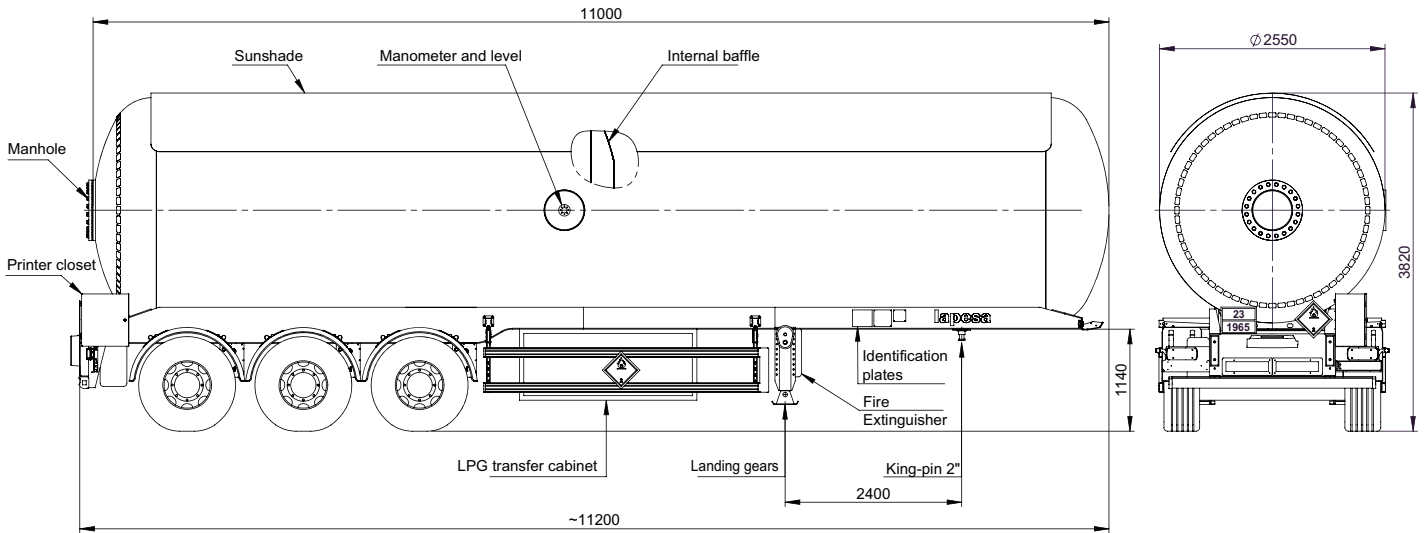
- Manufacturing dossier.
- ADR documentation.
- Instructions manual.
- Technical drawing
- Complete documentation of vehicle homologation.



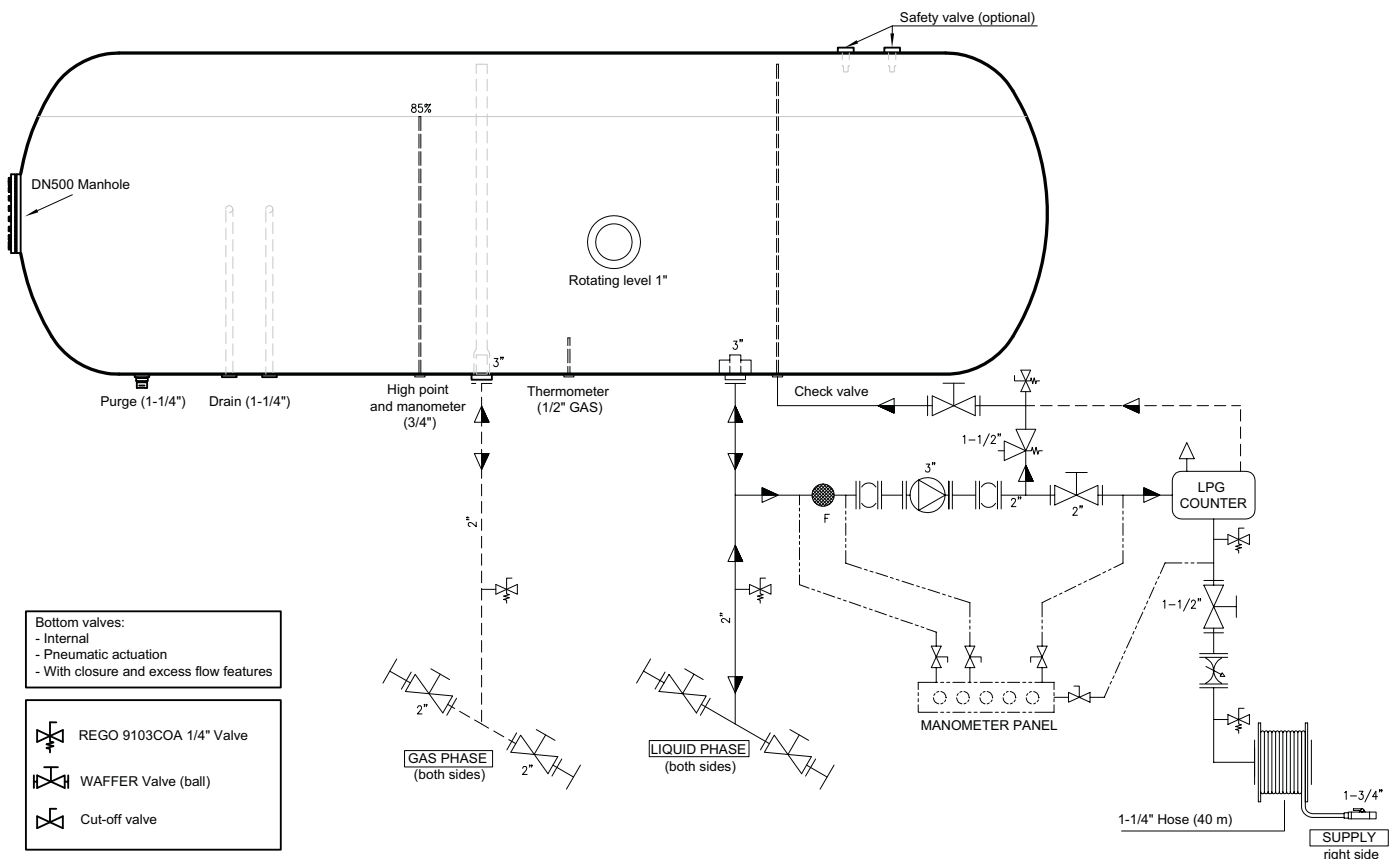
SOME EXAMPLES OF OPTIONAL ELEMENTS:

- Loading connections in the rear area.
- Auto-filling equipment, which allows the pump to be used to fill the tank
- Tank inertization.
- Thermal treatment.
- IMO8 (allows to transport the tanker by ship, for short distances).
- Finished with customer image, logos...
- Different brands for transfer equipment.
- Stainless steel pipes.
- Fire Safe Valves.
- Specific connections to gas phase and liquid phase.
- Extras in rolling unit:
 - Polished wheels.
 - Third autodirectional axis.
 - Integral LED lights.
 - Load distributor ... and many more.





PIPING AND INSTRUMENTATION (P&ID) LTT52



TANKER TRUCK

for transport and distribution of **LPG**

Tank type features:

- Products to be transported, liquid gases class 2 (ADR): propane, butane, isobutane, mixtures, etc.
- Manufactured under applicable European Directives: 2010/35/UE (π marking), 2008/68/CE.
- Applicable regulations: ADR, EN12493, IMO8 (optional).
- Maximum working pressure: 19,2 bar.
- Design and test pressure: 25 bar.
- Inspections and controls according to ADR.
- Anticorrosive primer finish (high strength cataphoresis for the frame) and white polyurethane finish (blue chassis).





OVERALL DIMENSIONS FOR A 3 AXLE TRUCK (26 TONS)

- Nominal capacity: 28 m³.
- Estimated tare weight of the truck without tank: 7.4 Ton.
- Approximate tare of the set: 14 Ton.
- LPG load: 12 Ton.

INCLUDED ELEMENTS IN A BASIC TANKER

- Internal baffles inside for transport with partial filling.
- Aluminum sunshade in the upper area of the cylinder.
- DN500 inspection manhole.
- Loading cabinet in the central area, with access from both sides.
- Distribution cabinet in the central area, right side.
- Other: ADR plates, fire extinguishers.

EMERGENCY/SAFETY SYSTEMS

- The tanker includes **6 emergency pushbuttons** in various tanker locations. When manually activated, they close the tanker stopvalves and the pump switches to stop mode.
- **Detector for closed cabinet:** When valves cabinet is closed (no intention for LPG transfer), this detector closes the tanker stop valves and the pump switches to stop mode.
- **Parking brake:** Tanker stop valves can only be opened when the parking brake is activated. Option to be specified (in coordination with the truck supplier).
- **Anti-start system:** In case the truck tries to be started with the valves cabinet open, this safety system acts on the truck brakes, leaving them constantly activated. To avoid a possible wrong contact during truck driving, that could cause a sudden break on road, this system only acts when speed is below 5 km/h (when starting the truck). Option to be specified (in coordination with the truck supplier).

lapesa
Solutions

We adapt our products to the needs of our clients (truck, capacity, equipment, sunshade, etc.). An example of a tanker is shown in this catalog. Check with us your requirements.

LPG EQUIPMENT

- Pneumatic operated bottom valves, REGO or similar.
- Manual stopvalves, ball type, with stainless steel sphere.
- Blackmer 3" type pump. With hydraulic motor. With Blackmer 1-1 / 2" bypass.
- Liquid Control type volumetric counter with temperature compensator. Electronic head. Printer in separate cabinet.
- Hose 1-1/4" (28 meters), In winder with pneumatic / hydraulic reel.
- Connections to gas or liquid phase, finished in flange. Optionally, the terminal will be placed according to the customer needs.
- All pipe sections are protected by relief valves, either manual or automatic.
- Other tank valves:
 - REGO type rotating level.
 - Internal safety valves, REGO type (IMO case).
 - High point indicator and pressure gauge.
 - Temperature indicator.

HYDRAULIC INSTALLATION:

- Under customer specifications, complete hydraulic equipment is included: hydraulic pump, oil tank, cooling circuit, etc.

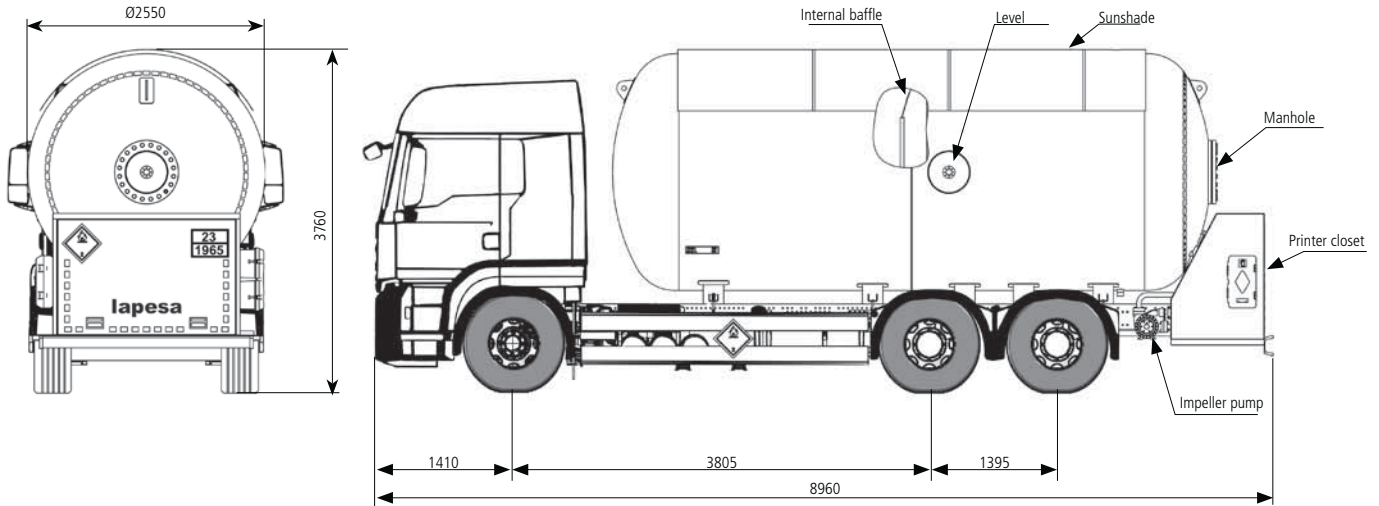
FINAL DOCUMENTATION

- Manufacturing dossier.
- ADR documentation.
- Instructions manual.
- Technical drawing.
- Complete documentation of vehicle homologation.

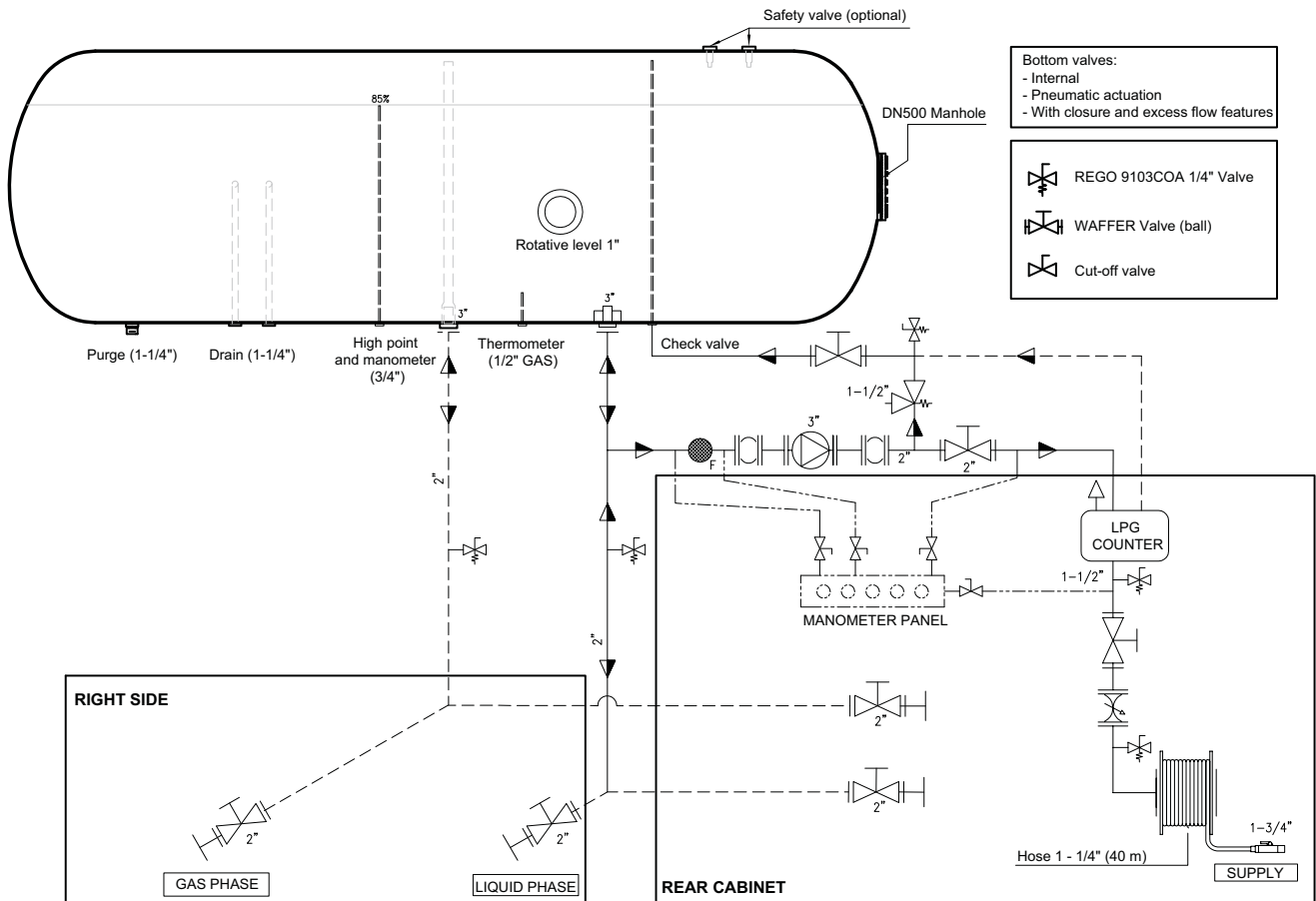
SOME EXAMPLES OF OPTIONAL ELEMENTS

- Loading connections in the rear area.
- Auto-filling equipment, which allows the pump to be used to fill the tank
- Tank inertization.
- Thermal treatment.
- IMO8 (allows to transport the tanker by ship, for short distances).
- Finished with customer image, logos...
- Different brands for transfer equipment.
- Stainless steel pipes.
- Fire Safe Valves.
- Specific connections to gas phase and liquid phase.





PIPING AND INSTRUMENTATION (P&ID) LTT28



MARKETS WORLDWIDE PROJECTS

EUROPA

ANDORRA
GERMANY
ARMENIA
AUSTRIA
BELGIUM
BULGARIA
FINLAND
FRANCE
HOLLAND
IRELAND
ITALY
NORWAY
POLAND
PORTUGAL
UNITED KINGDOM
RUSSIA
SLOVENIA
SPAIN
SWITZERLAND

AMERICA

ARGENTINA
BOLIVIA
CHILE
COLOMBIA
CUBA
DOMINICAN REP.
GUADALUPE ISLAND
MEXICO
PERU

AFRICA

ALGERIA
ANGOLA
BENIN
CAMEROON
CHAD
IVORY COAST
GABON
REUNION ISLAND
KENYA
MADAGASCAR
MOROCCO
MAURITANIA
NAMIBIA
NIGER
NIGERIA
SOUTHAFRICA
TANZANIA
TUNISIA

MIDDLE EAST

EMIRATES
JORDANIA
KUWAIT
LEBANON
OMAN
QATAR
SAUDI ARABIA

ASIA

BANGLADESH
MONGOLIA
SRI LANKA
VIETNAM

OCEANIA

AUSTRALIA
NEW ZELAND

SOUTH POLE

ANTARCTICA



lapesa



lapesa

Lapesa Grupo Empresarial

Pol. Ind. Malpica - Calle A, Parcela 1-A
50016 ZARAGOZA (SPAIN)

Tel.: +34 976 465 180 / Fax: +34 976 574 393

e-mail: lapesa@lapesa.es

www.lapesa.com



ISO 9001
BUREAU VERITAS
Certification

